

Lighthouse News

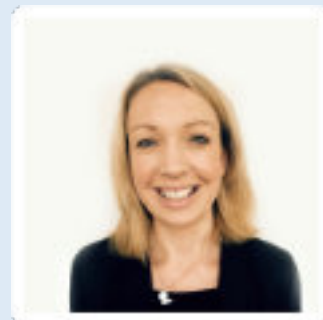
Summer 2019



A message from the Principal

It has been a very busy summer term at Lighthouse with lots of educational visits, internal and external activities from employers happening across all year groups. These consisted of: visits to the airport, football tournaments, fire and rescue services, construction talks, careers software companies, awards, music events, and an engineering competition.

I was very pleased that we were able to support the first Lighthouse School portrait photography session this term with 100% participation for all families who had requested a photo. It was lovely to see all the beautiful photos going home to families.



The Ida Building development behind the school is well on its way now and students have received talks from ESH Construction regarding safety on site; we expect the site will look very different when we return after the summer holidays.

Thank you for all your support for the Tour de Lighthouse event this year; “walking” to the international space station is no mean feat so we were really pleased for the students to achieve their destination miles and see everyone enjoy the day.

Next academic year, Lighthouse will be expanding to accommodate more students and as a result we have been recruiting new staff to support the expansion. This comprises of: a new English and Maths teacher, a new Food Technology teacher, and 6 new support tutors. A number of staff are also taking on new responsibilities such as the introduction of Key Stage Coordinators to support the embedding of EHCP targets across the wider curriculum, and staff progressing from tutor roles to Wellbeing tutors. Congratulations everyone.

We are looking forward to the ‘Lighthouse has got talent show’ on the 23rd July 2019 and we hope you can make it to join in the fun.

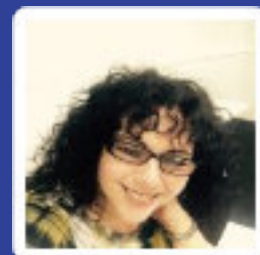
At the end of year, I like to reflect on the students’ achievements and this year the individual progress each student has made is really something they all should be proud of. Those achievements included: reading, communication, creativity, hygiene, mathematics, resilience, exam readiness, relationship building, music and independent living skills.

Have a wonderful summer and see you all in September.

Emma

Meet a Governor: Deborah Laycock

This is the perfect time for me to introduce my role as safeguarding governor for the school as June 24th – June 30th was Safeguarding week, promoted by Leeds Safeguarding Partnership. Students have been doing work in PSHE around the safeguarding and keeping safe topic and school sent out a safeguarding information sheet for parents/carers.



Please do get in touch if you would like to discuss anything in relation to school safeguarding processes. My email is: deborah.laycock@lighthouseschool.co.uk

If you would like to discuss individual concerns, these must go directly to the school designated safeguarding lead Michelle Hoole via her email address: michelle.hoole@lighthouseschool.co.uk

Ambition | Versatility | Compassion | Innovation | Happiness | Devotion | Optimism | Respect

Lighthouse School Arthington House Hospital Lane LS16 6QB 0113 4570605 admin@lighthouseschool.co.uk

Welcome to Grace - our new tutor

Grace was interviewed by members of our Student Council:

Harry: What do you love to do?

Grace: I'm really into my fitness and my music.

Harry: Lets talk about your music, what do you like to play?

Grace: I play the Clarinet which I really enjoy doing and have done for many years.

William: What is your favourite kind of music?

Grace: I'm not sure as I'm into lots of different kinds of music, but I'd say at the moment my favourite genre would probably be jazz.

William: What is your history before starting here at Lighthouse?

Grace: I studied at Leeds College of Music which is in fact a university, where I studied classical musical performance which I really enjoyed. I also have played in a lot of different operas. I volunteered at Lighthouse for a year and then I got this job!

Thomas: Before you went to college and university what did you want to do at our age?

Grace: Well, I started playing the clarinet when I was 8. I know it sounds really boring but I wanted to play and perform classical, but I've decided I don't want to do that anymore.

William: It can be really scary if you are nervous performing can't it?

Grace: Well, the more you do it the more you learn to control your nerves. I played at the Royal Albert Hall recently and I am playing in an opera in the next few weeks so that should be good.

Matthew: Do you like tutoring and do you think you will enjoy it here?

Grace: This is my first tutoring job, but I am really enjoying it and I really enjoy spending time with the students.

Thomas: Do you believe in other life forms for example aliens and such?

Grace: I can't say that I do to be honest.

Thomas: Big bang vs evolution? Which one would you be more interested in finding out about?

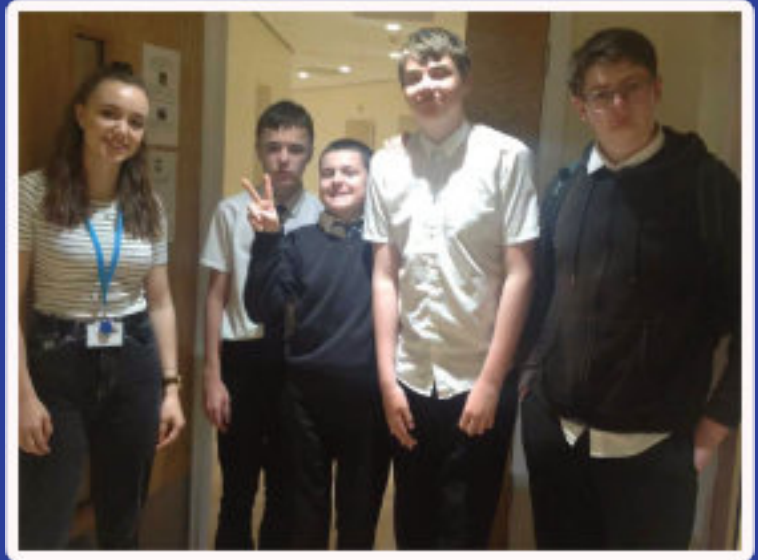
Grace: Probably evolution, it's very interesting to find out how we ended up like this isn't it.

Harry: What is your favourite insect?

Grace: My favourite insect is a butterfly.

William: What is your favourite car?

Grace: I would like a Volkswagen Beetle I think.



Student Council News

Since Easter, the Student Council has been sorting through all of the suggestions in the suggestion boxes and have decided to want to improve the quality of the MUGA as their main priority.

As a result of this, they have worked together to write a letter to the PTA to ask if they could help with this. They have written thank you letters to students who have suggested something, and explained in each letter whether it is something they are going to work on, or if not, why.

Not only this, but they have also been exploring how the running of student council can be improved for next year.

Last but not least, they also came up with the design for the noticeboard in the reception area and helped put it together.

They have also created a new student council logo.



Ambition | Versatility | Compassion | Innovation | Happiness | Devotion | Optimism | Respect

Lighthouse School Arthington House Hospital Lane LS16 6QB 0113 4570605 admin@lighthouseschool.co.uk

Art and Design at Lighthouse School

It's been a great year for art at Lighthouse school. Our links with Leeds Arts University have meant we have been able to offer students the chance to explore courses, careers, and progression onto Higher Education.

Staff and student ambassadors from the university visited Lighthouse. Our students were able to look at LAU student portfolios and discuss careers and progression opportunities in further and higher education. It was also a great opportunity to discuss the work they have been producing in school. The visit was very successful and created lots of interest for our students, which was a real highlight for the term.

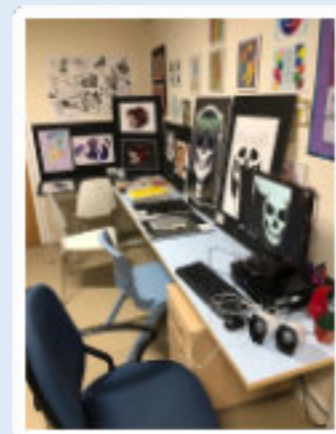
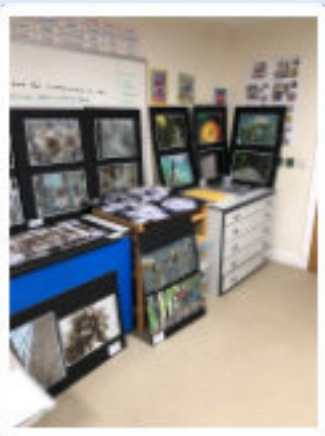
Lighthouse students were also invited to attend one of the final year shows at Leeds Arts University. This was a fantastic opportunity for students who may be thinking about an arts pathway to have a tour of the university, speak to staff about any additional support available and look at final year students' art work.

Arts Award and GCSE

The Arts Award, accredited by Trinity College London, has proven to be a huge success with our students and we look forward to expanding this award into further areas in the coming months. A massive thank you to all the arts students this year; the work they have produced has been fantastic. Well done everyone!

We would like to also congratulate our GCSE Art students who have recently undertaken the OCR GCSEs in Art and Photography. They worked incredibly hard and produced work of an impressively high standard.

Everyone at Lighthouse School is extremely proud of their commitment, dedication, and hard work.



Chicks and Caterpillars by Katy

In the school Science room there are caterpillars and eggs. The caterpillars will soon turn into butterflies. When they are butterflies and have learnt to fly they will be set free. The eggs have hatched into cute little chicks. The chicks will be staying in school for a week after they have hatched and then they will be sent back to the farm.

One chick is yellow, one is yellow and black and the other chick is black with a brown head. They are all really cute. The eggs start off in an incubator and 24 hours after they have hatched they will go in a cage because the incubator is too small for 7 chicks, food and water. The chicks hatch after 21 days and are then kept warm in a larger cage with food and water.

Caterpillars are different and they can turn into butterflies at any rate. In the science room there is a book all about chicks. It tells you when to put the chicks in the cage, species information and how to tell if they are male or female. It also gives information about the incubator, cage and heater. The students at school are all enjoying the caterpillars and chicks.



Ambition | Versatility | Compassion | Innovation | Happiness | Devotion | Optimism | Respect

Lighthouse School Arthington House Hospital Lane LS16 6QB 0113 4570605 admin@lighthouseschool.co.uk

Young Writers Competition

Some students in KS3 took part in a country-wide writing competition run by Young Writers. They were tasked with writing a 100 word saga based in a post-apocalyptic world that had been contaminated by an unknown disease. The students drafted, and re-drafted their sagas, maximising the tension and impact of the few words they had. The students did so well that three of them were selected to have their story published in book by Young Writers. Congratulations to Matthew, Josh, Jonathan and Milan for this amazing achievement!



Drama

The KS4/5 students entered their drama work into a monthly film competition and came runners up for February 2019. The competition was hosted by Into Film, an organisation that puts film at the heart of children and young people's education, helping to support their academic, cultural, and social development.



This is a fantastic achievement, and is a testament to all the hard work they put in bringing their scripts to life.

Well done everyone!



Geographers Supreme!

3A and 3B had a visit from a member of the Royal Geographical Society at the start of June.



Aimie Birket led the lessons and shared her knowledge and passion about climate change. She helped students to realise that we can all make small changes to our lifestyles that can have a positive affect on the environment. The students asked Aimee lots of relevant questions and we all learnt something new. Her main message was that it is not too late to make a difference.

3C had a visiting speaker from the Gideon Society. Hazel came in and took part in one of the RE lessons in our topic about Holy Books. She shared her thoughts about why the Bible was an all time best seller and explained to 3C what some of the Bible is about and why it is important to Christians. Students were given the opportunity to have a New Testament and Hazel kindly left some copies for use in RE lessons.

Space - The Final Frontier!

Students have been thinking a lot about Space this term. They have been looking at the science of space, using space as inspiration in English, and creating a number of space-based animations in Scratch.

All students showed a great deal of creativity and problem solving in their work and produced some wonderful final projects.



Ambition | Versatility | Compassion | Innovation | Happiness | Devotion | Optimism | Respect

Lighthouse School Arthington House Hospital Lane LS16 6QB 0113 4570605 admin@lighthouseschool.co.uk

Shine Dates: Summer



Date	Activity
Summer Shine: 9:15am to 3:15pm	
24 th July 2019	X-Scape Lazer tag, crazy golf, ten pin bowling and shopping
25 th July 2019	Bolton Abbey Outdoor activities and walking
26 th July 2019	Onsite activities with a festival theme! Festival fast food, live entertainment, arts and crafts, face paint, outdoor activities, snacks and drinks



Lighthouse End of Year Party

Thank you to everyone who came to our Summer Party! It was lovely to see the students have so much fun and also to see parents have time to chat with each other in such a social setting. A huge thanks to Nat for leading the planning group and to all our staff who worked tirelessly to make it such a success!



Ambition | Versatility | Compassion | Innovation | Happiness | Devotion | Optimism | Respect

Lighthouse School Arthington House Hospital Lane LS16 6QB 0113 4570605 admin@lighthouseschool.co.uk

Lighthouse School PTA

Lighthouse School PTA has been busy over the past few months, not least planning and preparing for the Spring Fair which was held on 18th May. It was a fantastic event (as always) and not only raised almost £1,000 for the school but also provided a safe and friendly space for families and staff to gather and enjoy time together.



Thanks must be given to all those who gave their time and talents to help and to everyone who came and generously spent their money. We look forward to the next school fair at Christmas. Can you please start saving your empty plastic fruit boxes for cakes the cake stall; grape boxes are ideal for this.

We are in the process of setting up an 'Easy Funding' account which means that families can support Lighthouse School PTA when they shop online. There will be more information about this shortly.

This academic year, it has been wonderful to welcome new parent members onto our PTA committee. It has been equally wonderful to have the continued support of some of the school staff. We had our final PTA meeting this term on Thursday July 11th; thank you to all who came.

If you would like more information about the PTA please email

Helen pta.helen@lighthouseschool.co.uk or Ann-Marie pta.annemarie@lighthouseschool.co.uk

Thank you for your continued support.

Student Voice Summer 19



Here are some results from our termly Student Voice Questionnaire. We used 3 different types of the questionnaire to ensure that all students could understand and answer the questions independently.

	Percentage of students who agreed/strongly agreed
I am happy at school	82%
I feel safe at school	84%
I am making good progress	85%
I am encouraged to be independent	84%
I am treated with respect	78%
I know who to talk to if I have a concern	87%

Parent Meetup

Come along to the Oxygen Freejumping Peaceful Play sessions. The sessions include:

- Plenty of space – reduced capacity
- Music turned down – no loud announcements
- Strobe lighting turned off – house lights only

These sessions happen every Sunday 6pm – 7pm and our parent meetup is on the first Sunday of every month.

The ticket price includes entry for a carer.



Ambition | Versatility | Compassion | Innovation | Happiness | Devotion | Optimism | Respect

Lighthouse School Arthington House Hospital Lane LS16 6QB 0113 4570605 admin@lighthouseschool.co.uk

Careers and Work Experience

Our students have taken part in a wide range of work experience this year:

Placement	Year Group	Number of students	Supported by school staff?	Days per week
John Lewis	12	1	Yes	1 day per week
	13	1		
	14	1		
Brick42	12	3	Yes	1 x ½ day per week
	13	1		2 x ½ days per week
	14	1		
St Leonard's farm	14	1	Yes	1 day per week
Keepers Coffee and Kitchen	10	4	Yes	2 hours per week
	11	2		
	12	1		
	13	1		
Compass House	12	2	Yes	Planning sessions every half term leading to sessions selling items to the public
	13	2		
	14	2		
Aireborough Play scheme	12	1	No	For 4 full days
East SILC	12	1	No	For a short intensive block
Internal Work Experience	12	1	Yes	A least 1 hour per week
	13	4		

Work Experience at St Leonard's Farm



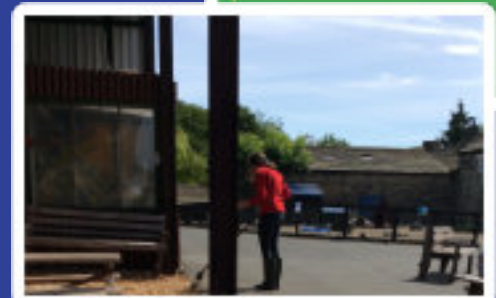
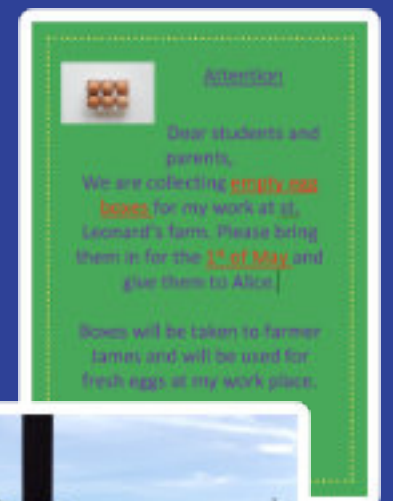
Hi my name is Alice.

I did work experience every Thursday at St Leonard's Farm which I really enjoy. A list of some of the jobs I do include:

- Egg collecting
- Catching and holding animals for the primary school children to stroke
- Putting more straw in the animal feeders
- Sweeping around the farm and in the pens
- Checking the smaller animals have food and water

My staff member who takes me has recently set me a challenge every Thursday because I have selective mutism. I have a sheet that has 5 boxes for me writing to the staff at the farm and 5 boxes for me talking out loud which I'm doing really well with.

My favourite farm animals are the goats. One of my favourite things is to see all the baby animals when I am working at the farm and 2 weeks ago I actually saw 2 baby goats being born which I was so lucky to see.



Ambition | Versatility | Compassion | Innovation | Happiness | Devotion | Optimism | Respect

Lighthouse School Arthington House Hospital Lane LS16 6QB 0113 4570605 admin@lighthouseschool.co.uk

Lighthouse Futures Trust Updates



So far this year the Trust has enabled Lighthouse School students to access supported work opportunities and training with our team of specialist Job Coaches.

- Lighthouse school students have accessed over 200 learning hours this week at Keepers Coffee & Kitchen, contributing to some of the students' ASDAN Hospitality qualification;
- Our students have also accessed over 20 hours work improving the Lighthouse School estate with Branching Out Grounds & Maintenance Services;
- They have also taken part in over 100 hours at John Lewis Partnership, gaining gold standard industry experience.

Keepers Coffee and Kitchen

We will be holding two family board game sessions with Cards or Die on Tuesday 6th and Tuesday 13th August between 10 - 12 in the store. Places are limited and so need to be reserved in advance by emailing nicola@lighthousefuturestrust.org.uk or messaging us via the Keepers Coffee Facebook page.

The cost is £2 per child/adult wishing to play and there will be a 10% discount offered to any people taking part for any food/drink/clothes/gift purchased on the day.

Follow us on Twitter @KeepersCoffee to find out more and support the best coffee shop in Cookridge!



Connections Club

The flyer for Connections Club features the Lighthouse logo at the top, followed by the text 'Make a connection Reconnecting Leeds'. Below this is a teal banner with 'CONNECTIONS CLUB' in white. The main text reads 'Social events with a heart' and 'We mix young adults on the autistic spectrum with their non-autistic peers.' It lists four bullet points: 1. Connect with Leeds based events for young adults aged 18-30 with autistic spectrum conditions and Leeds University students wanting to celebrate diversity. 2. We bring together people with different 'trauma/diff' in a mutually supportive network. Connect one-to-one with members and we meet on a monthly basis. 3. There is no membership fee and the only requirement is that people must be over 18 and independent in actions. 4. We provide genuinely satisfying social and emotional experiences from gigs to meet ups. At the bottom, there is a photo of a group of people and contact information: 'www.lighthousefuturestrust.org.uk', 'www.lighthousefuturestrust.org.uk', '07045 796 372', and social media handles for Facebook and Twitter.

Compass House



Our students have been part of the Compass House Pop Up Shop, held for a week in St John's Centre. The shop was provided free by Leeds City Council and has been run by a team of students from Lighthouse and other Specialist inclusive Learning Centres from across the city.

There was a gorgeous product range made and grown by students throughout the school.

Nine Lighthouse students have been helping to run the shop across the course of the week, developing skills in retail, customer service, merchandising, marketing and cash handling - as well as having fun!



All funds raised go into the enterprise budget at the School to fund further products and business ventures.

Ambition | Versatility | Compassion | Innovation | Happiness | Devotion | Optimism | Respect

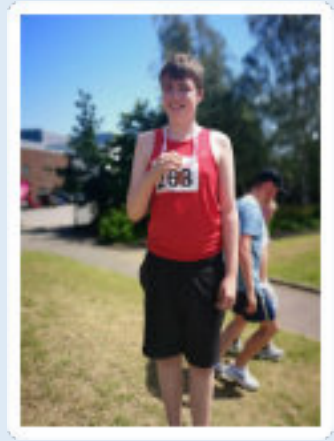
Lighthouse School Arthington House Hospital Lane LS16 6QB 0113 4570605 admin@lighthouseschool.co.uk

National Athletics Achievement



William took part in the Mencap National Athletics Championship which is a national competition. William not only beat his personal best with a 6.11M throw in the shot put, he also came third in his age group against professional Paralympians.

Well done William!



Kirsty Heys, Classroom Champion!

A parent has nominated Kirsty Heys for the Yorkshire Evening Post Classroom Heroes Award for Kirsty's work with that student.

She told the Yorkshire Evening post that

“Lighthouse is an amazing school for children on the autism spectrum and Kirsty has supported us both.

We were very lucky in finding lighthouse school. He has come on leaps and bounds and has overcome a lot of struggles. Kirsty not only has a big heart, but a wonderful personality and works so hard.

Kirsty's dedication to the school has earned her the utmost respect from not only students but teachers and parents. She deserves to be recognised.”



Run For All Success

Millie, Danny, Alex, James, Harry, Eve and their families all took part in the Run for All Junior event on the 6th July. It was a fantastic morning, with students racing 2.5km each, gaining us an additional 35km towards our Tour de Lighthouse event at the end of the year! Our students even won the Secondary School prize of an office scanner and a plaque to celebrate their success!

The scanner will be a fantastic addition for our school and will be used to help students prepare for their office-based work experience.

Thank you to all who took part especially Kirsty and Colin for forgoing their Saturday morning lie in and inspiring supporting, organising and cheering everyone over the finish line.

A special thanks goes to Liat Bresloff, a specialist Sports Therapist who has organised this event and fundraised for Lighthouse at this event for the last 7 years - thank you Liat, it was the best so far!!



Ambition | Versatility | Compassion | Innovation | Happiness | Devotion | Optimism | Respect

Lighthouse School Arthington House Hospital Lane LS16 6QB 0113 4570605 admin@lighthouseschool.co.uk

Teen Life

Our new National Autistic Society (NAS) parent programme, Teen Life, has now completed two successful programmes. The parents that have attended have felt very empowered by the course and have enjoyed attending the weekly sessions. Our two facilitators have been so interested in the feedback and sharing from all the families involved to make the course so interactive.



Lorraine Macalister, who authored the programme for the NAS, also came to visit our facilitators Vicky and Zuhal to have a day at Lighthouse. She was so inspired by her visit and she really enjoyed meeting some of our pupils. She commented, "What a wonderful school, I really enjoyed my visit and it was fantastic to see such good autism practice in one place".

The PTA at Lighthouse have funded the start of this project to allow families to access the programme.

If you would like to take part please see the school website for more information or contact your child's form tutor.

Teen Life units

The six sessions cover a range of topics including:

- Understanding Autism & Autistic perspectives
- Self Esteem
- Spending time with other people
- Stress and anxiety
- Understanding behaviour
- Understanding your diagnosis
- Understanding intense interests
- Managing expectations
- Puberty & Independence skills
- Education & Planning for the future



Parent Feedback on Teen Life



"I've been absolutely enthralled by this programme"

"I've dealt with things at the weekend differently and more successfully, after thinking about the course"

"I've been able to think and reflect for 2 hours a week and be with other parents who understand the difficulties I can have"

"I feel more empowered to try things with more confidence"

Ambition | Versatility | Compassion | Innovation | Happiness | Devotion | Optimism | Respect

Lighthouse School Arthington House Hospital Lane LS16 6QB 0113 4570605 admin@lighthouseschool.co.uk